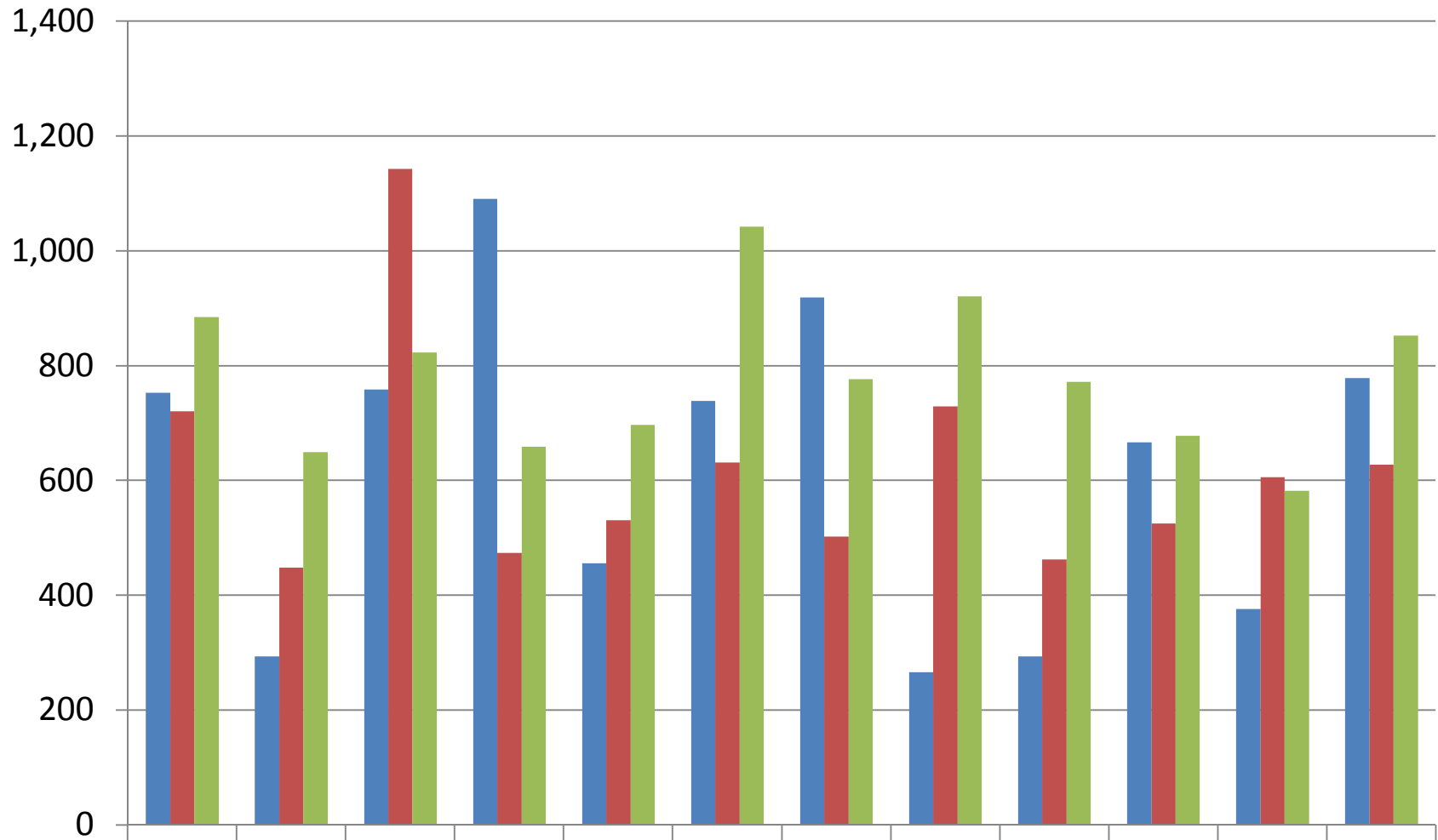


PROPIEDAD HORIZONTAL (PH)



| | Ene | Feb | Mar | Abr | May | Jun | Jul | Ago | Sep | Oct | Nov | Dic |
|-------------|-----|-----|-------|-------|-----|-------|-----|-----|-----|-----|-----|-----|
| ■ Creadas | 753 | 293 | 758 | 1,091 | 456 | 738 | 919 | 266 | 293 | 666 | 376 | 778 |
| ■ Hipotecas | 720 | 448 | 1,143 | 474 | 531 | 631 | 502 | 729 | 462 | 525 | 606 | 627 |
| ■ Traspasos | 885 | 649 | 823 | 659 | 697 | 1,042 | 776 | 921 | 772 | 678 | 582 | 852 |