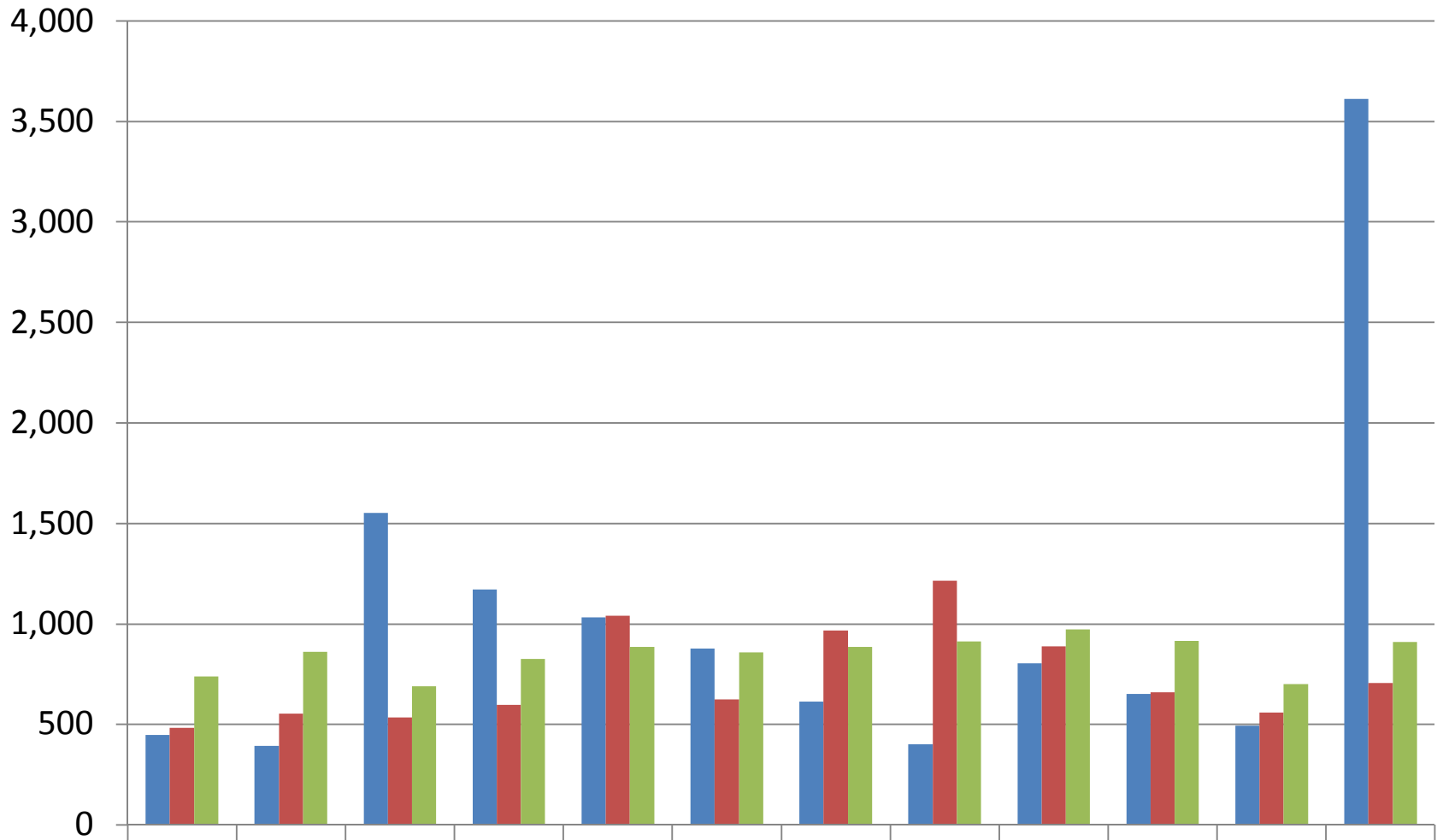


PROPIEDAD HORIZONTAL (P.H.)



	Ene	Feb	Mar	Abr	May	Jun	Jul	Ago	Sep	Oct	Nov	Dic
■ Creadas	446	392	1,552	1,172	1,033	876	613	399	802	651	494	3,613
■ Hipotecas	481	554	534	597	1,041	624	966	1,215	889	658	558	705
■ Traspasos	738	860	689	825	886	859	884	913	971	916	699	909